



AIRCOM 4G POC Wireless Interphone

User Manual

Version: 08/19-01

To the user: Thank you very much for choosing our AIRCOM Digital 4G POC wireless walkie-talkie. The walkie-talkie is novel in design, reasonable in structure and stable in performance and is designed to meet the needs of users for ultra-compact walkie-talkies with convenient operation and excellent performance. In order to fully understand the performance of the machine, please read this manual before use.

Table of Contents:

1. User usage and safety information
2. Product inspection
3. Familiar with the machine
4. Preparation work
 - 4.1. Charging the lithium ion battery
 - 4.2. Loading / unloading the battery
 - 4.3. Install the antenna
 - 4.4. Install the belt clip
 - 4.5. Install the speaker / microphone
 - 4.6. SIM card installation
 - 4.7. Battery charging method
 - 4.8. Boot and shutdown
 - 4.9. Screen and button lock
5. System software application
 - 5.1. Home page
 - 5.2. The status bar
 - 5.3. Intercom function
 - 5.4. Information
 - 5.5. Settings
 - 5.6. Establish a wireless connection
6. Safety matters
 - 6.1. Safety warnings and precautions
 - 6.2. Use the walkie-talkie precautions when driving the vehicle.
 - 6.3. Medical equipment
 - 6.4. Your walkie-talkie
 - 6.5. Locations and blasting areas that may cause an explosion
 - 6.6. Electronic equipment
 - 6.7. Car safety
 - 6.8. Precautions on the aircraft
 - 6.9. Battery use
 - 6.10. Precautions for using the charger
 - 6.11. Cleaning and maintenance
7. Disclaimer
8. Legal statement
9. Copyright statement:



10. Product factory inspection certificate

11. Warranty description

1. User usage and safety information

1.1 For your safe and efficient use of this transceiver, please read the information below.

1.2 Turn off the walkie-talkie before entering a flammable or explosive environment.

1.3 Do not replace the battery or charge the battery in a flammable or explosive environment.

1.4 Turn off the intercom before the blasting area and the area where the detonator is located.

1.5 Do not use a walkie-talkie with a damaged antenna. Damaged antennas that come into contact with the skin may cause minor burns.

1.6 The maintenance work of the walkie-talkie can only be carried out by professional technicians. Do not disassemble the walkie-talkie by yourself.

1.7 In order to avoid problems caused by electromagnetic and / or electromagnetic compatibility, please close the walkie-talkie, such as hospitals and other health care places, when the "Please turn off the walkie-talkie" sign is attached. When flying, when the crew asks to turn off the intercom, please turn off the intercom.

1.8 In a car with an airbag, do not place the walkie-talkie in the area that may be involved in the deployment of the airbag.

1.9 Do not expose the intercom to direct sunlight for long periods of time or near a heating device.

1.10 When the portable walkie-talkie is launching, keep the walkie-talkie in a vertical position and speak close to the microphone.

1.11 If you wear a portable walkie-talkie on your body, make sure the antenna is at least 2.5 cm away from the body when it is launched.

1.1 Safety warnings and precautions

Before using and operating this equipment, read and observe the following precautions to avoid dangerous or illegal conditions and to ensure the best performance of this equipment.

Tip: The operating system only supports official upgrades. If the user swipes an unofficial system, the user is responsible for security risks and losses.

(The possible risks are: user information is stolen, text messages are automatically sent, your location is located, etc.)

1.1.1 Safety instructions

● Before using the walkie-talkie, read the information in this section and let your child know about it.

● Do not hit, throw, or pin the walkie-talkie, and avoid dropping, squeezing, or bending the walkie-talkie. :

● Do not use the transceiver in a damp environment such as a bathroom, and avoid the machine being wetted or rinsed with liquid.

● Turn off the intercom when it is prohibited to use the intercom or use the intercom to cause interference or danger.

● Do not use the walkie-talkie while driving a car, so as not to interfere with safe driving.



- In medical facilities, please follow the relevant regulations or regulations. In the area near the medical device, turn off the intercom.
- Turn off the intercom when boarding, to avoid wireless signals interfering with aircraft control signals.
- Turn off the walkie-talkie near high-precision electronic equipment, otherwise the electronic equipment may malfunction.
- Do not disassemble the walkie-talkie and accessories. Only the authorized organization can repair the walkie-talkie.
- Do not place the walkie-talkie and accessories in appliances with strong electromagnetic fields.
- Keep the walkie-talkie away from the magnetic equipment. The radiation from the walkie-talkie will erase the information stored on the magnetic equipment.
- Do not use the walkie-talkie in places with high temperature and flammable gas (such as near gas stations).
- Keep the walkie-talkie and accessories out of the reach of children. Do not allow children to use the walkie-talkie without supervision.
- Please use the battery and charger specified by the company, otherwise it may cause an explosion.
- When using this walkie-talkie, please comply with relevant laws and regulations and respect the privacy and legal rights of others.
- Please strictly follow the instructions in this manual when using the USB cable, otherwise your walkie-talkie or personal computer may be damaged.

1.1.2 Medical equipment

- In medical and health care places where wireless devices are prohibited from being used in express text, please turn off the equipment in accordance with the regulations of the place.
- Radio waves generated by the device may affect the normal operation of implantable medical devices or personal medical devices, such as pacemakers, implanted cochlea, hearing aids, etc. If you use these medical devices, please consult their manufacturer for restrictions on the use of this device.

1.1.3 Hearing protection

When listening to music or talking on a headset, it is recommended to use the minimum volume setting required for music or calls to avoid hearing damage.

1.1.4 Flammable and explosive areas

- Do not use this equipment at gas stations (service stations) or near flammable materials or chemicals, and follow all instructions in graphics or text. Equipment may cause an explosion or fire in or around fuel or chemical storage and transport areas or in explosive areas.
- Do not store or transport the device and its accessories in the same box as flammable liquids, gases or explosive materials.



1.1.5 Traffic Safety

- Do not hold the device while driving and follow the relevant regulations of your region or country.
- Do not place the device above the car airbag or in an area accessible from the airbag. Otherwise, when the airbag is inflated, the device will be pushed by a strong external force and cause serious damage to the inside of the vehicle.
- Wireless equipment may interfere with the flight system of the aircraft. Please comply with the relevant regulations of the airline. If the wireless equipment is prohibited, please turn off the equipment.

1.1.6 Operating environment

- Do not charge or use the device in a place that is dusty, damp, dirty, or close to a magnetic field, so as to avoid malfunction of the internal circuit of the device.
- Do not use the device during thunderstorms to avoid lightning or other damage.
- If there is a place where it is forbidden to use wireless devices, please turn off the device.
- When the device is powered by the power adapter, keep the ambient temperature between 0 °C and 55 °C. Do not use outside the above temperature range. When the ambient temperature is too high or too low, it may cause a malfunction.

1.1.7 Child Health

This device and its accessories may contain small parts that should be out of reach of children. Children may inadvertently damage the device and its accessories, or swallow small parts resulting in suffocation or other hazards.

1.1.8 Environmental Protection

Please comply with local laws regarding the handling of equipment, batteries and their accessories, and support recycling operations. Do not dispose of the device, battery and accessories as normal household waste.

1.1.9 Original accessories

Use only original accessories supplied by the device manufacturer. If you use any non-original accessories, it may affect the performance of the device, violate the warranty terms of the device and the relevant regulations of the country on communication terminal products, and even cause personal injury.

1.1.10 Using the battery and charger

- When charging is complete or not charging, disconnect the device and unplug the charger from the power outlet.
- Do not connect the metal conductor to the battery pole or touch the end of the battery to avoid short circuit of the battery and physical damage such as burns caused by overheating of the battery.
- Do not place batteries or equipment around heating equipment such as microwave ovens, ovens, or radiators. Overheating of the battery can cause an explosion. Do not disassemble or



modify the battery to avoid battery leakage, overheating, fire or burst.

- If the battery leaks, please do not let the skin or eyes touch the leaked liquid; if it gets on your skin or eyes, rinse it with clean water and go to the hospital for medical treatment.
- If the battery has abnormalities such as discoloration, deformation, or heat during use, charging, or storage, stop using it and replace it with a new one.
- If the charger power cord is damaged, do not continue to use it to avoid electric shock or fire.
- Do not throw the battery into a fire, as this may cause the battery to catch fire and burst.

1.1.11 Maintenance

- Please keep the equipment and its accessories dry. Do not use an external heating device such as a microwave oven to dry it.
- Do not subject the device and its accessories to strong shocks or vibrations to avoid damaging the device and its accessories, or causing the battery to burn or explode.
- Do not place the device and its accessories in areas where the temperature is too high or too low. Failure to do so may result in malfunction, fire, or explosion of the device, battery, and charger. When the temperature is below 0 ° C, the performance of the battery is limited.
- Do not place sharp metal objects such as pins near the earpiece of the device. The magnetic properties of the device's earpieces will attract these objects, which may cause injury when you use the device.
- Do not use harsh chemicals, detergents or strong detergents to clean the device or its accessories. Shut down before cleaning and maintenance, and disconnect the charger from the device.
- Do not disassemble the equipment and accessories without authorization. Otherwise, the equipment and accessories will not be covered by the company.
- If the device collides with a hard object or the device is partially impacted by a strong external impact, do not touch or attempt to remove the broken part. Please stop using it immediately and contact the designated service point in time.

1.1.12 Emergency call

In an emergency, if the device is turned on and within the service area, the device can be used for emergency calls. Since there is no guarantee that the telecom network will be able to connect in all situations, do not use this device as the only contact method in an emergency.

2. Product inspection

Welcome to our wireless walkie-talkie. Before using, We suggest you:

- Please check the product packaging box for signs of damage;
- Please carefully open the box and check if there are any items listed in the table below. If you find any loss or damage in the handling of this product and its accessories, please contact the



dealer immediately.
number of the stuffs.

Item Name	Quantity
Antenna	1
Belt & Clip	1
Battery	1
USB Cable	1
Power Adapter	1 (Optional)

3. Familiar with this machine

Thank you for purchasing our walkie-talkie.

Be familiar with the connectors and components of the transceiver before use.

Tip: The use of data services will generate data traffic and corresponding fees. The specific data traffic is subject to the operator's statistics.

Side View

3.1 Name of each component

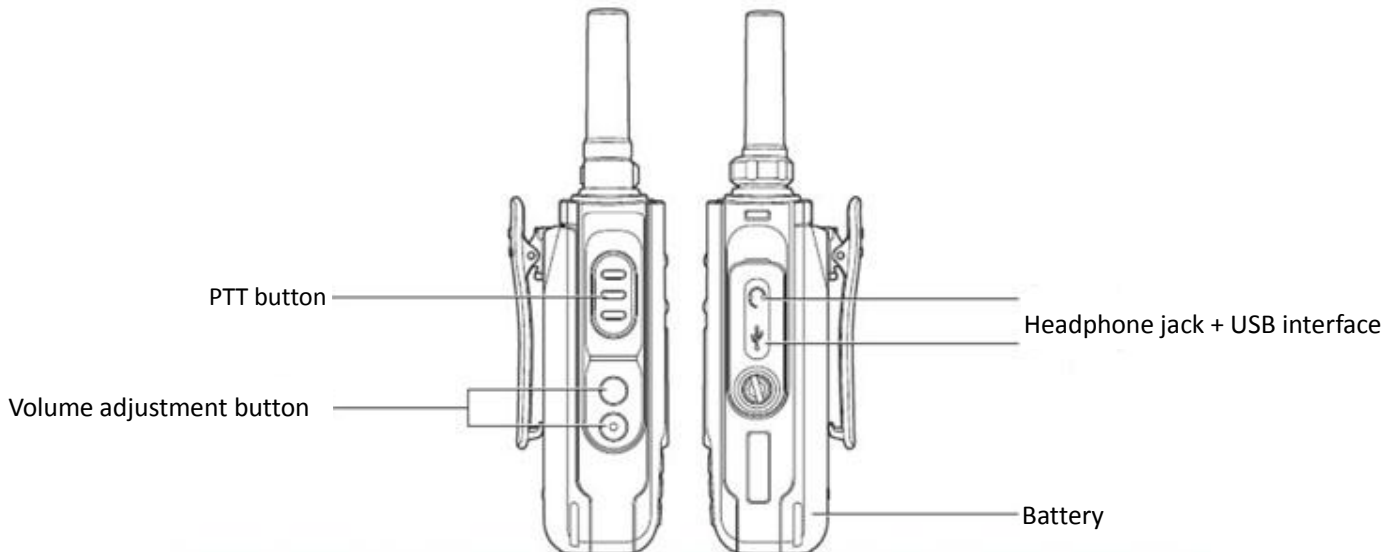
PPT button

Volume adjustment button

Headphone jack

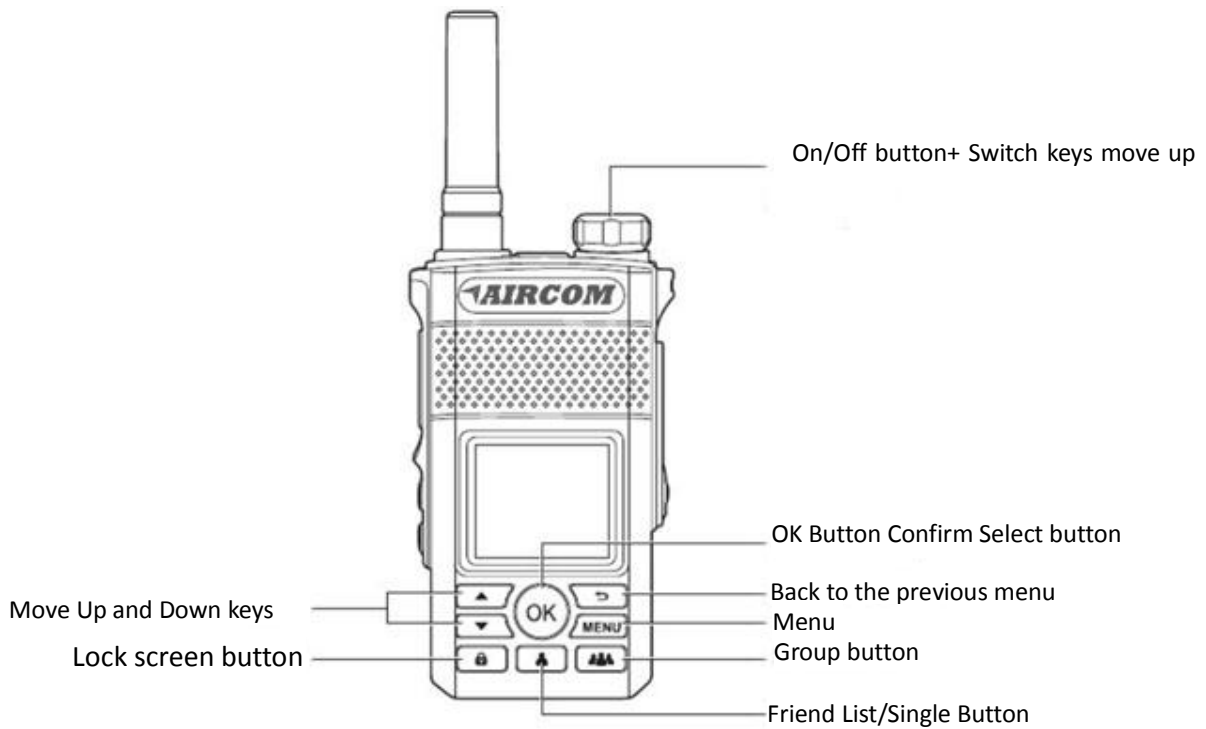
USB interface

Battery



Front View:

- On/Off button
- Move up and down keys
- Up and down switch
- Lock screen / unlock one
- OK, MENU
- Confirm / check button.
- Return to the previous menu setting
- Group list button
- Friend list button



3.2 Button definition

3.2.1 Physical button

3.2.1.1 Up and down keys: Move up and down in the setting interface/group list interface/member interface

3.2.1.2. OK button: Confirm/check button

3.2.1.3. Back button: return to the previous menu

3.2.1.4. MENU button: Enter system settings

3.2.1.5. Lock screen button: 1. Lock screen / unlock keyboard: long press (3 seconds or more)

2. Bright screen / off screen: tap

3.2.1.6. Buddy list key: enter the buddy list to initiate a temporary intercom

3.2.1.7. Group button: enter the group list, press the up and down keys to select different groups



3.2.2 Function side button

3.2.2.1. Volume button: adjust the volume of the machine up and down

3.2.2.2. PTT key

1. Long press to initiate a voice intercom

2. Select the user who needs a temporary call in the buddy list/group member list, press the PTT button to create a dynamic group.

3.2.3 Knob button

3.2.3.1. Press and hold for 3 seconds to turn on and off

3.2.3.2. Turn the knob on the group list/buddy list/group member/setting interface to switch the options up and down.

3.2.4 Led light

3.2.4.1. Shutdown indication: red light flashes

3.2.4.2. Standby status: green light flashes

3.2.4.3. Initiating an intercom: the red light is always on

3.2.4.4. Received the intercom: the green light is always on

3.2.4.5. Not registered indication: the red light is always on

3.2.4.6. Battery indicator:

1. Low battery (less than 15%): the yellow light flashes quickly;

2. During charging: the red light flashes slowly;

3. Full charge (higher than 90%): slow green light

4. Standby: The green light flashes slowly.

4. Preparation work

4.1 Charging the Li-ion battery

The battery is not charged at the factory, please charge it before use. .

Charging the battery for the first time after purchase or long-term storage (more than two months) does not allow the battery to reach its normal capacity. After repeated charging/discharging for two or three times, the use capacity will increase to the normal state.

Cautions

● If the battery is fully charged, do not charge it again. Otherwise, the battery life will be shortened or damaged.

● After recharging the battery, remove it from the battery charger. Charging the battery for more than 5 days will shorten the battery life due to overcharging.

Note:

● The ambient temperature during charging should be between 5 and 40 °C. When charging outside this range, the battery is not fully charged.

● Turn off the power of the radio with lithium-ion battery before charging. Using a walkie-talkie while charging the battery in the machine prevents the battery from charging properly. :

● Even if the usage time does not increase after the correct charging, the battery life has expired. Please update the battery.

Plug the AC adapter's plug into the adapter jack on the back of the charger.

Plug the AC power adapter into the AC power outlet.

Plug a lithium-ion battery or a walkie-talkie with a lithium-ion battery into the charger.



- Confirm that the battery is in contact with the charging contacts.
- The charging indicator lights red and charging starts.

After charging the supplied battery for **4 hours**, remove it or the transceiver with it from the charger.

- After the charger is fully charged, the indicator light is steady green.
- Remove the AC adapter from the AC power outlet.



4.2 Loading / Unloading battery

The average battery life of the included battery is 10 hours.

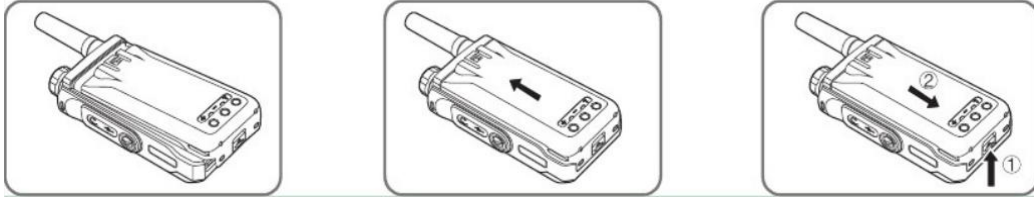
The average usage time was measured with 5% emission time, 5% reception time, and 90% standby time.

Note:

- Do not short the battery charging contacts or discard the battery in a fire.
 - Do not disassemble the battery case.
1. Align the top of the battery with the corresponding groove on the back of the transceiver.
 2. Push the battery along the back of the walkie-talkie to the base of the walkie-talkie until you hear a click.



3. To remove the battery, pull the battery clip 1 at the bottom of the back of the battery and remove the battery.



4.3 Installing the antenna

Hold the walkie-talkie and screw the antenna clockwise into the connector on the top of the walkie-talkie until it is tight.

Note: Do not use the antenna as a handle, keychain, or speaker/microphone suspension. This use can damage the antenna and reduce the performance of the radio.

4.4 installation belt clip

If necessary, secure the belt clips included in the package to the rear case of the machine.

Note:

● If the belt clip is not installed, its installation position will become hot during continuous communication or when placed in a hot environment.

Note

● Do not use the glue used to prevent loose screws when installing the belt clip, otherwise the outer casing of the walkie-talkie will be damaged. The acrylic acid contained in this glue will injure the back panel of the walkie-talkie.

Text in the picture:

Antenna

Belt clip

Speaker/microphone

USB charging port



4.5 Installing the speaker/microphone

Plug the speaker/microphone into the speaker/microphone jack.

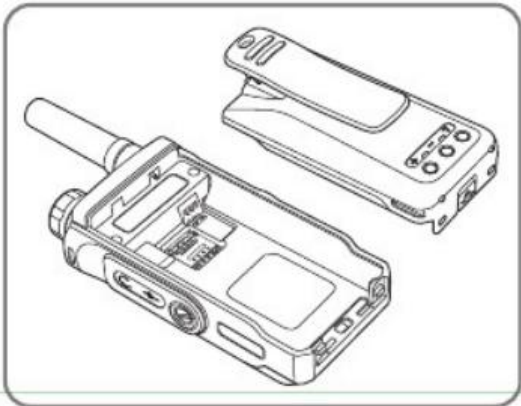
4.6 USB charging port

Open the machine's headphone cover and the charging cable plugs into the machine to start charging.

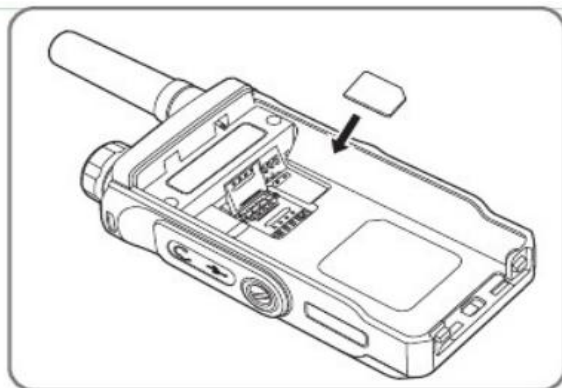


4.7 SIM card installation

4.8. Open the back cover



4.9. Install the SIM card as shown





4.8 Battery charging method

4.8.1. The transceiver is charged in the power on state, and the battery status icon is displayed as indicating that charging has started.

4.8.2. When the battery icon is displayed as indicating that charging has been completed, disconnect the charger from the power outlet.

Note:

- If the battery is not used for a long time or the battery is exhausted, it may not be able to boot normally during charging. This is normal phenomenon. Please charge the battery for a while and then turn it on.

- The battery can be recharged repeatedly, but since the battery is a loss product, if the standby time of the intercom is greatly reduced after normal charging, please replace the battery.

- When the power of the intercom is insufficient, the intercom will prompt. When the battery is too low, the intercom will automatically shut down.

4.9 Boot and shutdown

In the off state, press the knob for 3 seconds until the startup screen appears, you can turn on the intercom. In the power-on state, press the knob button for 3 seconds, a prompt box will pop up, and select "Shutdown" to make the intercom machine.

4.10 Screen and button lock

4.10.1 Screen lock

When the intercom is turned on, pressing the lock screen will turn off the screen. The walkie-talkie will automatically go out after a period of inactivity.

4.10.2 Unlock screen

Press the lock screen button to wake up the screen.

4.11 Homepage

After the device is powered on, it will enter the intercom home page. After the login is successful, the local name and group name will be displayed. In the home page, press the group button to enter the group list, press the friend list button to enter the friend list.

Home display information: local name, group name, and voice status;

5. System software application

5.1 Home

After the device is powered on, it will enter the intercom home page. After the login is successful, the local name and group name will be displayed.

In the home page, press the group button to enter the group list, press the friend list button to enter the friend list.

Home display information: local name, group name, and voice status;

5.2 Status bar

The status bar contains current time, location, network mode, signal status, power, and more.



5.3 intercom function

After booting, the intercom platform software is started by default, and the default intercom group is entered. (If the network is disconnected or the signal is not good, press the PTT button to reconnect and log in.)

5.3.1 Group Call:

In the home page, press the PTT button to initiate a group intercom. Press the group button to enter the group list interface, press the up and down button (or turn the knob button) to select the group, press the OK button to confirm.

5.3.2 Dynamic Group:

1 Friend Dynamic Group: Click the buddy list shortcut button on the home page to enter the buddy list, press OK to select the friends you want to call, select multiple friends, press PTT to create dynamic group.

2 Group member dynamic group: Press the group list button on the homepage interface, select the group to which the member is to be temporarily called, press OK to enter the group member display interface, use the up and down movement keys to select the member to be temporarily called, Select multiple, click OK button to confirm, press PTT button to establish dynamic call group.

5.4 Settings

In the home page, select “Settings” to enter the setting menu. You can check or set the status of the network settings, Bluetooth, factory reset, and phone status.

5.4.1 Wireless Data Bluetooth Connection

- 1). Press the Home screen and select Settings > Bluetooth.
- 2). Enter the Bluetooth setting interface, press OK to turn on the Bluetooth switch, the walkie-talkie will list the Bluetooth devices in the search range.
- 3). The arrow keys select the device you want to connect, and the OK button determines the connection.

※ If your open detection is set to On, the other party can also search for your Bluetooth device.

6. Security matters

6.1 Safety Warnings and Precautions

- Please use the walkie-talkie correctly. When making or receiving a call, hold the walkie-talkie in the same way as a wired telephone, then speak directly into the microphone and ensure that the walkie-talkie is at an appropriate distance from the body.
- Some people may be prone to seizures or dizziness under flashing lights (such as watching TV). If you have had a similar history of illness, consult your doctor before playing a walkie-talkie game or using the flash function.

- Keep the walkie-talkie out of reach of children so that children do not use it as a toy, causing personal injury.

6.2 Precautions for using the walkie-talkie while driving the vehicle

Please follow the relevant traffic regulations when driving and pay attention to traffic safety.

6.3 Medical equipment

- When using the walkie-talkie next to some medical equipment such as cardiac pacemakers, be careful to keep at least 20cm between the open intercom and these medical equipment; do not



put the walkie-talkie in the chest pocket; use and wear pacing Listen to the phone on the opposite side of the device to reduce potential interference; turn off the radio if necessary. If you have any other questions, please consult the medical device manufacturer before use. Some digital walkie-talkies may interfere with some hearing aids. If such interference occurs, contact the hearing aid manufacturer for a solution.

- If you have other personal medical equipment (such as implanted cochlea), consult with the manufacturer to ensure that these devices are able to shield the surrounding RF signals.
- In places with special requirements such as hospitals or nursing homes, please pay attention to the restrictions on the use of walkie-talkies. If necessary, please turn off the intercom.

6.4 Your walkie-talkie

- You can only use original or approved parts. The use of any unapproved accessories may affect the performance of the walkie-talkie, violate the warranty terms of the walkie-talkie and the relevant national regulations on communication terminal products, and even cause personal injury.
- When cleaning the intercom, please turn off the power and use a slightly damp and clean anti-static cloth. Be careful not to use chemicals such as cleaning agents when cleaning the surface of the radio.
- Your intercom opportunities generate electromagnetic fields. Please do not place them on magnetic storage media accessories such as computer disks.
- Using the walkie-talkie near electrical equipment such as TVs, telephones, radios, and personal computers may cause interference.
- Please do not expose your walkie-talkie to strong sunlight to avoid excessive heat damage.
- Do not store the walkie-talkie near or inside a water heater, microwave oven, hot cooking equipment or high-pressure container to avoid damage.
- Do not store or use the radio in a high temperature environment or in a high temperature environment.
- Please do not connect with other unsupported devices.
- Do not disassemble the intercom.
- Please do not put flammable and explosive materials together with the walkie-talkie to avoid danger.

6.5 Locations and blasting areas that may cause an explosion.

- Before entering areas that may cause explosion due to potential factors (such as oil storage, chemical plants, etc.), if the walkie-talkie is not designed for use in this area, please turn off the walkie-talkie first.
- In such areas, do not remove or install the battery, and do not charge the transceiver, as sparks may cause an explosion or fire in these environments, causing personal injury.
- In order to avoid interference with blasting operations, please close the walkie-talkie in the vicinity of the electric detonator in the explosion area and the place where the directional slogan such as the walkie-talkie is closed.

6.6 Electronic equipment

The use of radio equipment, including walkie-talkies, may interfere with some electronic equipment with poor shielding performance, such as some electronic systems in motor vehicles,



consult the equipment manufacturer before using the radio if necessary.

6.7 Car safety

- Airbags, brakes, speed control systems and fuel injection systems should not be affected by wireless transmission. If you encounter any of the above problems, please contact your car dealer. However, please be careful not to put the walkie-talkie on the area above the airbag or after the airbag is deployed, so as not to cause the external force generated by the airbag to inflate the walkie-talkie to cause damage to the owner.
- Turn off your walkie-talkie when refueling. The same applies to places where two-way wireless devices are prohibited.

6.8 Precautions on the aircraft

Please turn off the intercom before the plane takes off. In order to prevent interference with the flight communication system, it is forbidden to use the walkie-talkie for wireless communication during flight. The use of the walkie-talkie when the aircraft is not taking off should be approved by the crew in accordance with the safety regulations.

6.9 Battery use

- Please do not short the battery to avoid damage to the battery, heat and fire.
- Do not place the battery at high temperatures or throw it into a fire to avoid an explosion.
- Do not use sharp objects to puncture the battery surface.
- If you do not use the battery for a while, discharge it and store it in a dry, dark place, cool place.
- Stop using the battery and charger when they are damaged or significantly deteriorated.
- Return the used batteries to the supplier or to the designated collection point, not to household waste.

Cautions !

- If the battery is damaged, avoid contact with the contents. If it is contaminated with skin, use plenty of water to rinse it. If necessary, seek medical advice.

6.10 Notes on using the charger

- To improve charging efficiency and ensure charging safety, please use 220V AC.
- Do not short-circuit the charger, otherwise it will cause electric shock, smoke and damage to the charger.
- Do not use the charger with the power cord damaged. Doing so may cause fire and electric shock.
- Please clean the dust accumulated on the power socket in time.
- Please do not put the container of water in the side of the charger to prevent the water from spilling and causing overheating, leakage and malfunction of the charger.
- Please do not disassemble or modify the charger, otherwise it will cause personal injury, electric shock, fire and damage to the charger.
- Do not use the charger in a place with high humidity such as a bathroom, as this may result in electric shock, fire, and damage to the charger.
- Please do not touch the charger, wires and power socket with wet hands, otherwise it may cause electric shock.
- Do not place heavy objects on the power cord or attempt to modify the power cord. Otherwise, it may cause electric shock or fire.



- Unplug the power plug from the outlet before cleaning and maintenance. Grab the charger when pulling the plug. The hard-wire power cord may damage the power cord and may cause electric shock or fire.
- Please do not charge in the following places: places where the sun is too strong and too hot; wet, ashy places or places with high vibration (phone to malfunction).


6.11 Cleaning and maintenance

- Do not touch corrosive liquids, which may corrode electronic circuits and cause damage to the product.
- Please clean the product with a soft, dry cloth.
- Do not wipe the product with alcohol, thinner or benzene.

7 Disclaimer

- The company does not assume any responsibility for losses caused by natural disasters (such as earthquakes, floods, etc.) that exceed our ability to act.
- In any case, any loss associated with the use of this product (including loss caused by the use of the manual), such as: loss of company profits, loss of reputation, business interruption, or loss/change of stored data The Company shall not be liable for any special, incidental, consequential or indirect damages resulting therefrom.
- The company does not assume any responsibility for the loss caused by improper use of communication hardware or software not specified by the company.
- The company does not provide any form of guarantee and technical support for the information, materials, documents or other products and services obtained through the use of this product, and the use of such information, materials, documents or other products and services by users is not Take any responsibility.
- This product is not recommended for users to install any third-party software. The company does not assume any form of guarantee and technical support for third-party software used by this product.
- The contents of this manual are provided "as is". Except as otherwise required by applicable law, the Company makes no warranties of any kind, express or implied, as to the accuracy, reliability or content of this document.

The maximum electromagnetic radiation absorption ratio SAR of this product is 0.251W/kg, which meets the requirements of national standard GB 21288-2007. Electronic Information Products Declaration of Toxic and Hazardous Substances.

Part Name	Toxic and Harmful substance or elements					
	Ferry (Pb)	Mercury (Hg)	Cadmium (Cd)	Six tag chromium (Cr6+)	Polybrominated benzene (PBB)	Polybrominated diphenyl ether (PBDE)
The machine is outside and antenna						
Singleboard circuit module	X	○	○	○	○	○
Display	○	○	○	○	○	○
Camera module/Optical lenses	○	○	○	○	○	○
Electroached device/ vibrating motor	○	○	○	○	○	○
Charger	○	○	○	○	○	○
Headset	○	○	○	○	○	○
Data line	○	○	○	○	○	○
Battery	X	○	○	○	○	○
Label	○	○	○	○	○	○
Other component	○	○	○	○	○	○
	<p>○: The specification limits are as follows. X: means that the toxic substance is in excess of at least one homogenous material of the component. Requirements under SJ/T 11363-2006  The product has an environment friendly life 20 years and the logo is shown on the left. The green life. The limit applies only when the products is working in the conditions specified in the products manual. The environmentally friendly life of replaceable parts may differ from that of the product. If any, Please refer to the time limit indicator on the parts.</p> <p>Note: Some of the components listed in this table (e.g. headsets) may not be standard for your equipment. The parts actually sold are subject to availability.</p>					

8. Legal statement

The copyright of this material belongs to the company. No unit or individual may extract, copy or translate in any way without the written permission of the copyright owner. Infringement We will improve in time for the typographical errors in this manual and the inconsistencies with the latest information. These changes will not be notified in advance, but will be incorporated into the new manual. The company reserves the right of final interpretation.



The pictures in this manual are only schematic diagrams. If the pictures are inconsistent with the actual items, please refer to the actual items. For other related parameters of the walkie-talkie structure, battery and charger, please refer to the actual items. Depending on the model and function of the product you purchased, the accessories that come with it will vary. Please refer to the actual contents in the box.

Copyright © AIRCOM Digital 2019. All rights reserved.

Version number: 08/19-01

Release date: 201908;

9. Copyright statement

This user's instruction manual is the company's print, copyright, privacy will be investigated. Statement.

Before using the walkie-talkie, please read this user manual carefully and keep it for future use.

The company reserves the right to interpret the printing errors, inconsistencies with the latest information, software upgrades and product improvements in this manual and to make changes at any time. These changes are subject to change without prior notice and will be incorporated directly into the new User Manual.

10. Product factory inspection certificate

This product has been strictly tested by our company in accordance with the relevant procedures and requirements of the factory quality inspection. The product quality meets the relevant index parameters, meets the quality standard requirements, and is qualified. Grant factory.

11. Warranty description

- This product has a Two-years warranty and Six months warranty on accessories.
- Calculate the warranty from the date of purchase of this product. You can enjoy the free warranty service when the product is used under normal conditions during the warranty period.
- Paid repair service will be implemented during the following conditions:

1. Exceeding the warranty period;
2. Failure and damage caused by failure to use, maintain and maintain the instructions;
3. Renovation, modification, disassembly, use of non-original accessories or batteries without the authorization of the company;
4. Antenna failure or damage caused by non-material or processing problems;
5. The walkie-talkie related mark or serial number label is torn, the serial number is erased or unrecognizable;
6. The date of purchase cannot be identified;
7. Failure or damage caused by force majeure;
8. Normal and normal wear and tear